

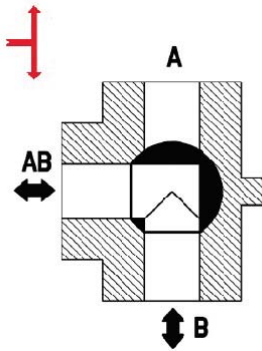
THREE-WAY ZONE VALVES



VZU M Three-way Zone Ball Valve

Zone ball valves intended for heating or solar thermal systems with water or antifreeze fluid and for drinking water systems. The valve is fitted with a lever for manual control.

An electric actuator can be retrofitted to the valve - see page 40.



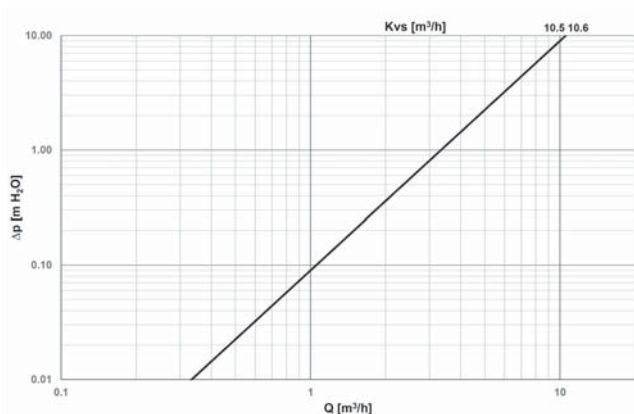
TECHNICAL DATA

MAX. WORKING PRESSURE	10 bar
MAX. PRESSURE DIFFERENCE	10 bar
FLUID WORKING TEMPERATURE	up to 110 °C

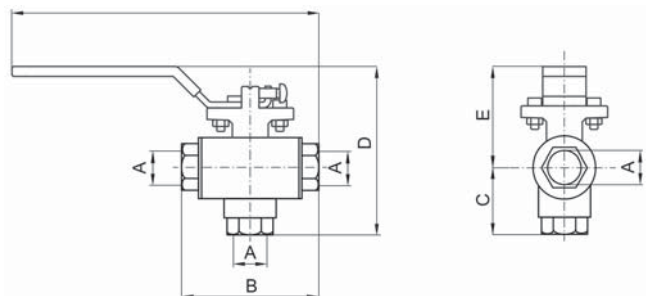
MATERIALS

VALVE HOUSING	CW617N
VALVE SPINDLE	CW617N
VALVE BALL	chrome-plated brass
O-RINGS	EPDM, FPM

VALVE PRESSURE DROP



DIMENSIONS AND TYPES



		VZU M 320 3/4F	VZU M 320 1F	VZU M 320 5/4M
CONNECTIONS	--	3/4" F	1" F	5/4" M
B	mm	96	96	116
C	mm	50	50	60
D	mm	108	108	118
E	mm	58	58	58
F	mm	168	168	174
WEIGHT	kg	0.8	0.8	0.8
NOMINAL DIAMETER	DN	20	20	20
KVS	m ³ /h	10.5	10.6	10.6
CODE	--	20603	20604	20605