

## G 6/4" ELECTRIC HEATING ELEMENTS with thermostatic head

Output: 7.5 - 12 kW

Application: thermal stores and hot water tanks

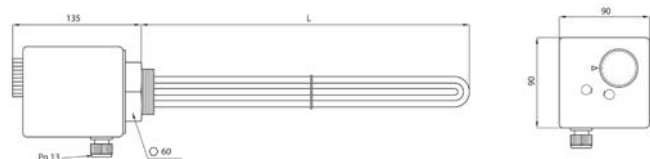


### ETT-S Electric Heating Elements

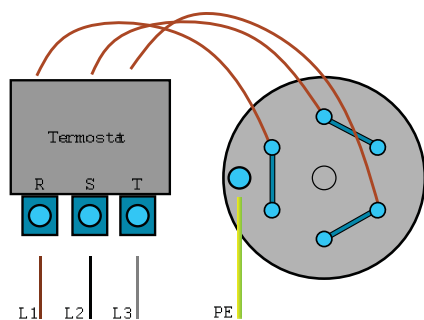
**Nickel-plated** electric resistance heating elements **with thermostatic head, no contactor**, intended for heating of static or flowing heating water or antifreeze fluid in thermal stores or **drinking water in hot water tanks**. These elements are not intended for stainless steel tanks.

They are designed to be installed in a horizontal position so that the element is completely immersed in the working fluid, with the cable gland downwards. They are wired to the mains by a fixed connection of the cable (not included in supply) to a terminal box or switchboard.

### DIMENSIONS, MODELS



### CONNECTION DIAGRAM

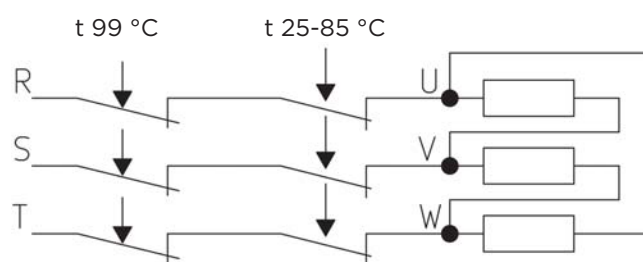


### TECHNICAL DATA

|                                   |  |
|-----------------------------------|--|
| HEATING ELEMENT                   | nickel-plated copper                         |
| CONNECTION                        | G 6/4" M                                     |
| HEXAGON WITH G 6/4" THREAD        | nickel-plated brass                          |
| CASE                              | plastic                                      |
| POWER SUPPLY                      | 230V 50 Hz                                   |
| IP RATING                         | IP 65  |
| PROTECTION CLASS BY EN 61140 ed.2 | I  |
| <b>OPERATING THERMOSTAT</b>       | capillary type, adjustable                   |
| SWITCH-OVER CONTACT               | 20 A   |
| TEMPERATURE ADJUSTMENT RANGE      | from 25 °C to 85 °C                          |
| TEMPERATURE ADJUSTMENT METHOD     | rotating knob                                |
| SWITCHING DIFFERENCE              | 5 ± 1.5 °C                                   |
| <b>SAFETY THERMOSTAT</b>          | capillary type, fixed setting                |
| SWITCH OFF TEMPERATURE            | 99 +0/-6 °C                                  |
| RESET                             | manual, after temperature drops by 10 K min. |

### INTERNAL WIRING DIAGRAM

3/N/PE AC 400V



| MODEL                       |    | ETT-S<br>7.5 | ETT-S<br>9.0 | ETT-S<br>12.0 |
|-----------------------------|----|--------------|--------------|---------------|
| NOMINAL OUTPUT              | kW | 7.5          | 9.0          | 12.0          |
| MAX. CURRENT                | A  | 20           | 20           | 20            |
| ELEMENT LENGTH (L)          | mm | 575          | 670          | 805           |
| NON-HEATING END LENGTH (LN) | mm | 100          | 100          | 100           |
| CODE                        | -- | 20169        | 19701        | 20167         |