

DATA SHEET

2-way Zone Ball Valves with Actuator, VZK R model



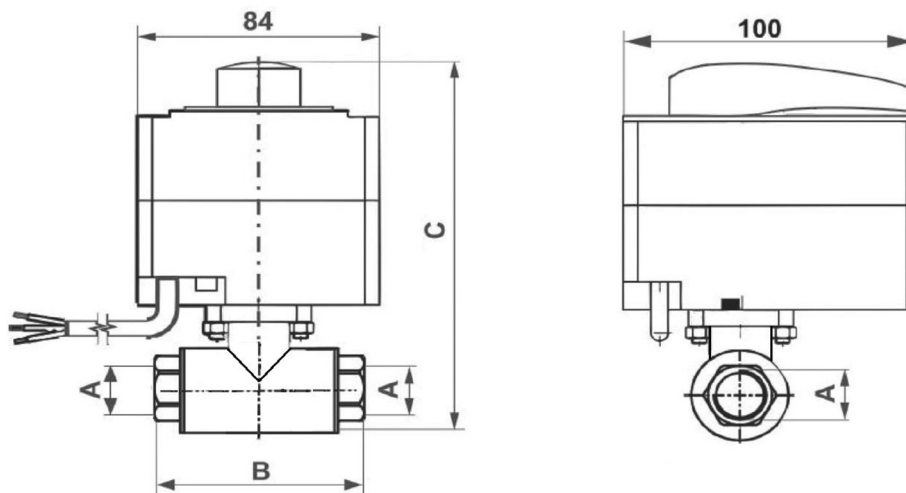
Main Features

Application	It is intended as a shut-off valve. It can be used in connection with any controller or thermostat that has a 230 V switching contact to switch the switched phase of the actuator. The valve is normally closed (N.C.) and opens when the switched phase is switched. In the event of a controller or thermostat failure, the actuator can be operated manually.
Working fluid	Drinking water, water; water/glycol (max. 1:1) or water/glycerine (max. 2:1).
Installation	Any position, except for the actuator facing downwards.

Table of Codes

Marking	Code	Nominal clearance DN	Connecting thread A	B	C	Open/close time [s]	K_{vs} [m ³ /h]	Weight [kg]
VZK R 220-230-1P-60 1/2F	19682	20	2 x G 1/2" F	96	160	60	8.9	1.2
VZK R 220-230-1P-60 3/4F	19677	20	2 x G 3/4" F	96	160	60	18.7	1.2
VZK R 220-230-1P-60 1F	19680	20	2 x G 1" F	96	160	60	20.0	1.2
VZK R 225-230-1P-60 1F	19686	25	2 x G 1" F	104	160	60	31.6	1.5
VZK R 225-230-1P-60 5/4F	19689	25	2 x G 5/4" F	104	160	60	34.3	1.5

Dimensions



Technical Data

Max. working pressure	10 bar
Max. fluid working temperature	110 °C
Angle of rotation	90°
Ambient working temperature	5 °C to 40 °C
Max. pressure difference	10 bar

Electric Data

Power supply	230 V 50 Hz
Max. power consumption	4 VA
Max. current	17 mA
Torque	5 Nm
IP rating	IP42
Protection class	II
Power cable cross section	3 x 0.5 mm ²
Power cable length	2 m

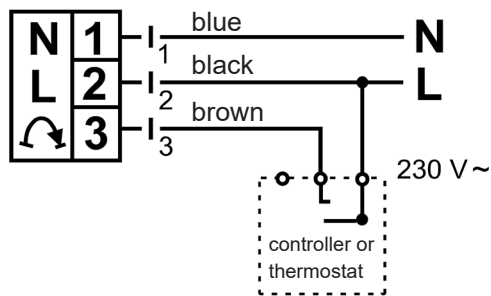
DATA SHEET

2-way Zone Ball Valves with Actuator, VZK R model

Materials

Valve housing	CW617N
Valve spindle	CW617N
Valve ball	chrome-plated brass
O-rings	EPDM, FPM
Seal	PTFE
Power cable	PVC

Electrical Wiring



The actuator is controlled by the switching contact of the controller or thermostat 230 V, 50 Hz. Permanent power supply is applied to terminals 1 and 2. The switched live is connected to terminal 3.

Installation and Operation

- Fluid can flow in either direction through the valve.
- The valve position is indicated on the actuator or by a groove on the valve spindle (after removing the actuator).
- The valve is factory set to the normally closed (N.C.) position (without the control phase switched on). It is possible to change it to the normally open (N. O.) position, see instructions.

Actuator in the Closed position

