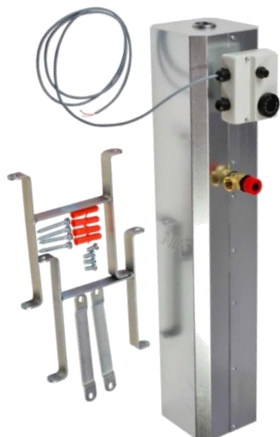


TPO-7.5 In Line Heater with Accessories



PV 3 Safety valve



Double encased immersion thermostat, sheath w. sensor, cable



Main features	
Application	continuous water heating
Description	it consists of an in line heater, safety valve, thermostat, wall bracket; the unit needs to be fitted with an el. heating element (ETT-A) of max. 7.5 kW output.
Working fluid	water, water/glycol mixture (max. 1:1) or water-glycerine mixture (max. 2:1)
Code	16166

** the in line heater cannot be used for DHW heating*

Technical data for TPO-7.5 in line heater	
Max. working pressure	3 bar (6 bar)*
Max. working temperature	100 °C
Storage temperature	0 to 60 °C
In/out/thermostat connection	3 x G 1" F
ETT connection	1 x G 6/4" F
Safety valve connection	1 x G 1/2" F
Set weight without ETT	10.5 kg

** max. working pressure value for in line heater is 6 bar (can be reached by replacing the supplied safety valve with a safety valve of 6 bar opening pressure)*

Accessories	
Electric heating element	ETT-A, max. output 7.5 kW

PV 3 safety valve technical data

Technical data	
Nominal pressure	PN 10
Opening pressure p _o	3 bar
Working temperature	max. 110 °C
Connection	G 1/2" M x G 1/2" F

Double encased immersion thermostat, sheath w. sensor, cable

Thermostat technical data	
Max. working temperature	80 °C thermostat head 120 °C thermostat sheath
Preset temperature of safety thermostat	100 °C (0/-6°C)
Temperature range of operating thermostat	0-90 °C (± 3 °C)
Hysteresis	4 ± 2,5 K
Operating thermostat contact load	C-1 10 (2,5) A / 250 V~; C-2 2 (0,4) A / 250 V~
Safety thermostat contact load	C-1 0,5 A / 250 V ~; C-2 10(2,5) A / 250 V ~
IP rating	IP 40
Class	I

Pt1000 sensor technical data	
Temp. measurement range	-50 to 180 °C
Temperature coefficient	3850 ppm / °C
Resistance at 0 °C	1000 Ω
Recommended measuring current	0.3 mA
Max. measuring current	2 mA
Sensor cable	2 x 0.5 mm ² , l = 4 m

TPO-7.5 In Line Heater with Accessories

