

DATA SHEET

HSK 220 Thermal Store for DHW heating



Main Features

Description	A thermal store designed for continuous DHW heating in an integrated stainless-steel heat exchanger. It can be easily placed under RegulusBOX.
Working fluid	Water (DHW heat exchanger), water, water/glycol mixture (max. 1:1) or water/glycerine mixture (max. 2:1) (thermal store).

Code

Thermal Store	19617
Insulation	19619

Energy Efficiency Data (as per EC Regulation No. 812/2013)

HSK 220 with insulation	
Energy efficiency class	B
Standing loss	62 W
Storage volume	222 l

Technical Data

Total tank volume	222 l
Fluid volume in tank	201 l
DHW heat exchanger volume	21 l
DHW heat exchanger surface area	6 m ²
Max. working temperature in Thermal Store	95 °C
Max. working temperature in DHW HX	95 °C
Max. working pressure in Thermal Store	4 bar
Max. working pressure in DHW HX	10 bar

Tank Materials

Tank material	S235JR
DHW heat exchanger material	AISI 316 L

Insulation Materials

Tank perimeter insulation	fleece
Tank perimeter insulation outer surface	hard polystyrene
Top tank insulation	polystyrene + fleece
Bottom insulation	fleece

Dimensions, Tipping height, Insulation thickness, Weight

Tank diameter	550 mm
Tank diameter with insulation	710 mm
Tank overall height	1105 mm
Tipping height without insulation	1152 mm
Tank perimeter insulation thickness	100 mm
Bottom insulation thickness	50 mm
Top insulation thickness	50 mm
Empty weight without insulation	60 kg

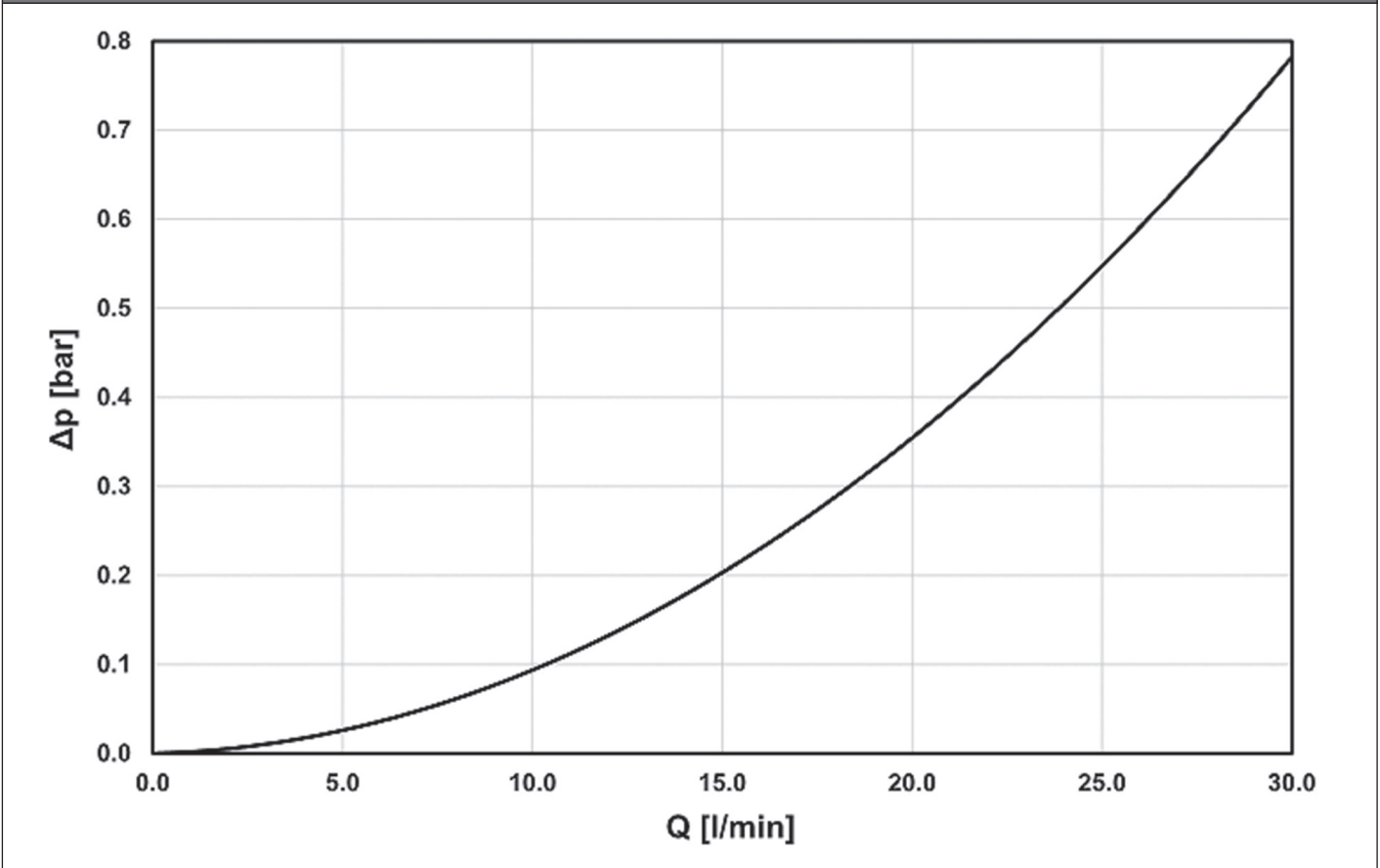
DATA SHEET

HSK 220 Thermal Store for DHW heating

Volume of supplied DHW (heated from 10 °C to 40 °C)

Heated volume	entire			entire			entire			entire		
Temperature in tank	50 °C			50 °C			60 °C			60 °C		
Backup heater	10 kW			none			10 kW			none		
Flow rate [l/min]	8	12	20	8	12	20	8	12	20	8	12	20
Hot water volume [l]	144	129	114	138	110	98	286	236	205	233	226	176

DHW heat exchanger pressure drop graph

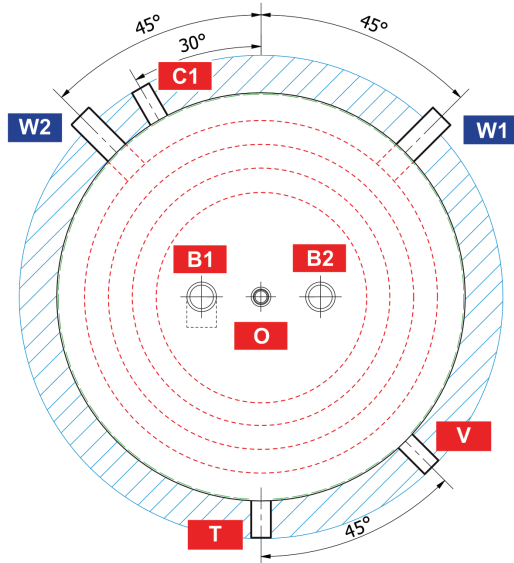
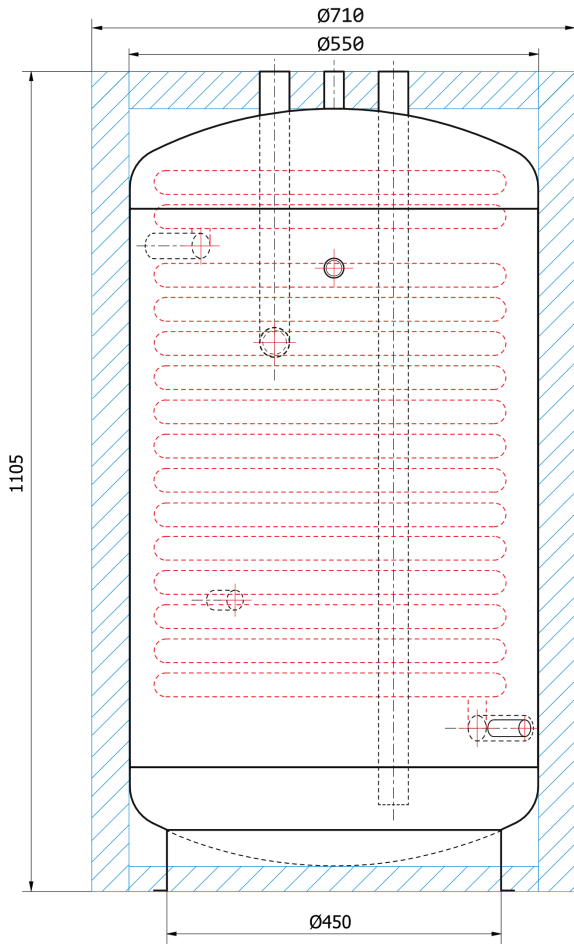


DATA SHEET

HSK 220 Thermal Store for DHW heating

Dimensions

Tipping height without insulation 1152 mm



CONNECTIONS

pos.	description	connec- tion	height [mm]
Heat sources			
B1	Incoming from heat source	G 1" F	1105
B2	Return to heat source	G 1" F	1105
DHW heating			
W1	Cold water	G 1" M	220
W2	Hot water	G 1" M	870
Control and safety			
C1	Temperature sensor	G 1/2" F	390
T	Thermometer	G 1/2" F	840
V	Drain valve	G 1/2" F	220
Air release			
O	Air vent valve	G 1/2" F	1105