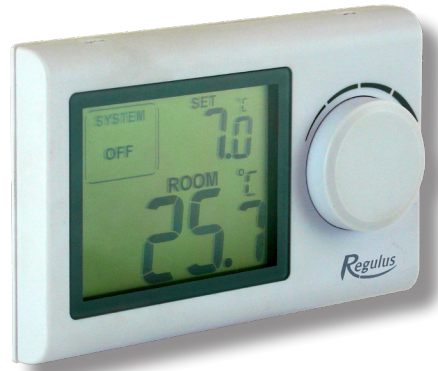




www.regulus.eu



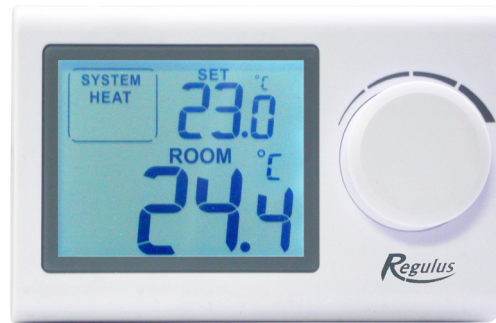
TP34

Installation and Operation Manual
TP34 Digital Programmable Thermostat

EN

TP34

1. Description



The digital thermostat is suitable to control temperature in a living room and is very easy to use. It allows you to control heating or cooling when the room temperature is lower or higher than set by the user. Installation is very easy thanks to the step-by-step instructions.

IMPORTANT: Installation of the equipment must be performed by a trained specialist. The user manual is intended for authorized operators.

IMPORTANT: Please read the instructions carefully before installation and follow the instructions provided when using the thermostat.

Recommendation regarding batteries

- Use only batteries of the specified type.
- Make sure that you insert the batteries as marked in the appropriate compartment. Inserting batteries with reverse polarity can damage the thermostat.
- Do not mix batteries of different types, e.g. alkaline with zinc-carbon batteries or old ones with new ones.
- If you know that the thermostat will not be used for a long time, remove the batteries to prevent damage to the thermostat by leakage.


Recommendations regarding installation and use of the thermostat

- This thermostat is intended for indoor use only (rooms, garages, verandas). Do not place it outdoors, do not expose it to rain.
- Do not place it in high humidity areas.
- It should be installed on an inner wall, about 1,5 m above the floor, located where room temperature changes can be felt thanks to freely circulating air.
- Do not install above a heat source (a TV set, heater, fridge etc.) or to places where it may be exposed to direct sunshine, draught, radiation from other devices.
- This thermostat can control only one device. Connecting several devices in cascade or in series (e.g. a heater and fan) does not guarantee its proper functioning.
- Turn off the power before connecting any equipment.
- Be extremely careful when connecting the equipment and power; improper connection or insufficient shielding of electrical cables can damage the equipment and endanger your safety.

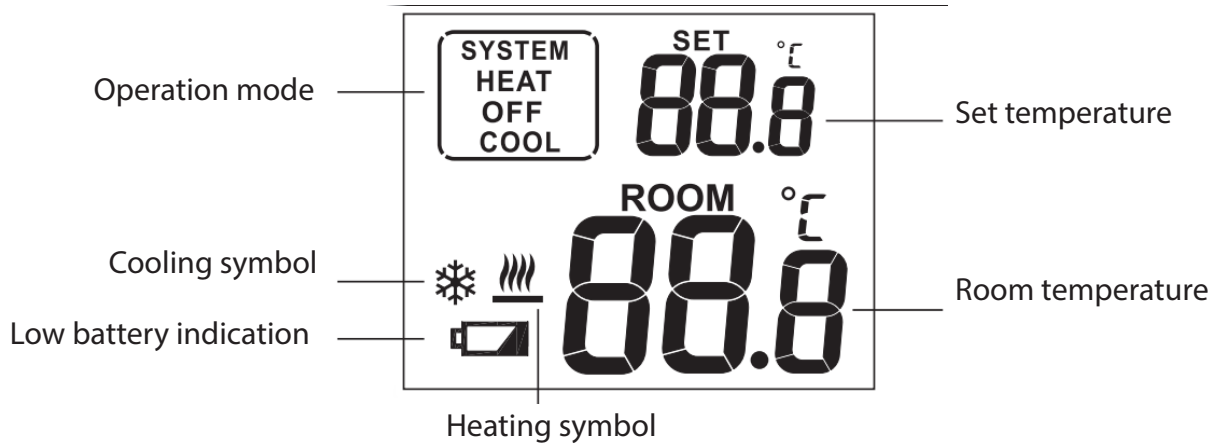
Note: The manufacturer disclaims any liability for damage caused by improper installation or use of the device contrary to the instructions.

2. Specifications

Thermostat: (code) 17168

1. Programmable: no
2. Displayed temperature range: 0-40 °C (in 0.1 °C increments)
3. Adjustable temperature range: 5-35 °C (in 0.5 °C steps)
4. Temperature measurement accuracy: ± 1 °C (at 20 °C)
5. Power supply: 2x 1.5A AAA batteries, alkaline (not enclosed)
6. Load: 6(2) A, 230 V
7. Low Battery Indication: When the battery voltage drops below 2.7 volts, the symbol  appears.
8. Standby power consumption: 25 μ A, backlight $\leq 5,5$ mA
9. Backlight colour: white
10. Dimensions: 120 x 77 x 28 mm (without support)

3. LCD Display



4. Operating Modes

Hold down the control dial for 5 seconds to open the option to select the operating mode. You can select from the following modes by turning the dial:

HEAT turn the dial to set the temperature

COOL turn the dial to set the temperature

OFF (frost protection): heating starts as soon as the room temperature drops below 7 °C

Finally, press the dial to confirm the desired mode or wait for 10 seconds until the mode is accepted.

5. Temperature Settings

1. To increase the temperature, turn the dial to the right (clockwise), then either press the dial or wait for 5 seconds until the value is accepted.
2. To decrease the temperature, turn the dial to the left (anti-clockwise), then either press the dial or wait for 5 seconds until the value is accepted.

6. Temperature Calibration

Hold down the control dial for 5 seconds to enter the selection of operating modes, then press and hold down the dial for another 5 seconds to open the temperature calibration option "CAL" (from -3 °C to +3 °C in 0.5 °C increments) . Turn the dial to the desired value and press to confirm.

7. Backlight

The backlight turns on when the dial is used and turns off after 15 s of inactivity.

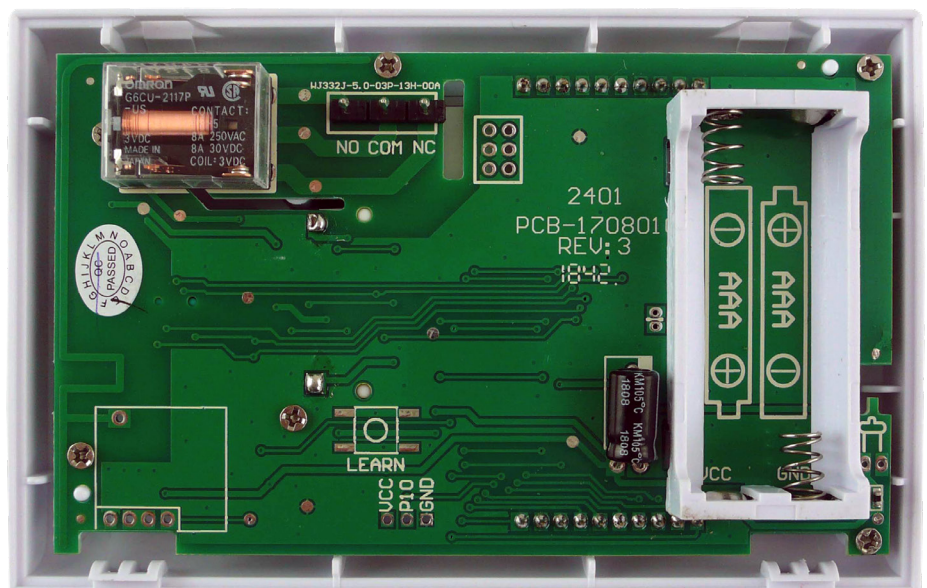
8. Battery Replacement

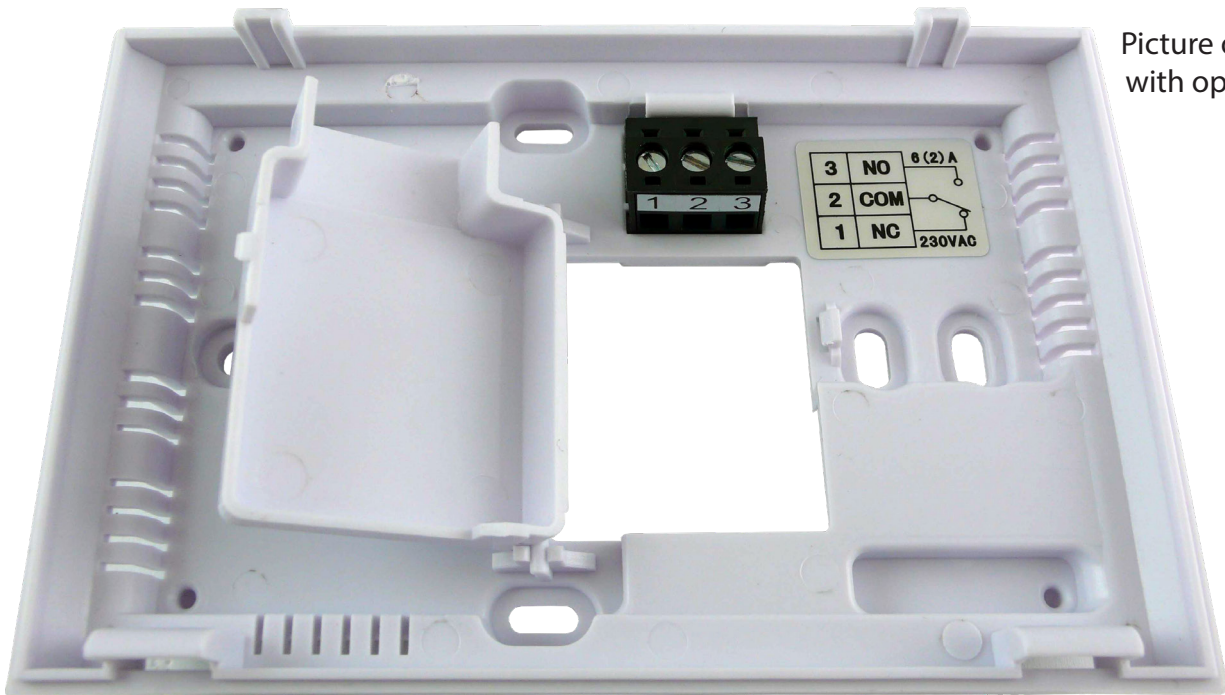
The average battery life is 1 year, but it can be significantly reduced if backlight is often switched on. When the low battery symbol appears on the display, the batteries need to be replaced

9. El. Wiring

The thermostat controls the boiler or A/C via a potential-free relay: 1 (NC), 2 (COM), 3 (NO).

Rear side of the front panel





Picture of the rear panel with open door (installs on a wall)

Heating: connect the two connecting cables of the controlled device to terminals No. 3 (NO – normally open) and No. 2 (COM).

Cooling: Connect the two connecting cables of the controlled cooling unit to terminals No. 2 (COM) and No. 1 (NC - normally closed).

- For safety reasons, the removed inner cover must be replaced immediately after connecting the cables.

The equipment shall be installed and connected by a qualified professional. Always follow the manufacturer's instructions when connecting the thermostat to a heating or cooling system.

Thermostat Wiring Diagrams for Heating:

For equipment requiring 230V power supply.

For equipment requiring potential-free contact.

