

SOLAR PUMP STATIONS WITH CONTROLLER

with el. socket to connect a heating element



CSE SOL G SRS1 T-E Pump Station

Pump Station with an integrated solar controller. The pump speed is controlled continuously by the controller. The integrated mechanical flowmeter serves for flow rate indication only. The flow rate itself is controlled by the controller. The pump station includes also a dedicated 230V power socket intended to connect an el. heating element of up to 3kW output. The socket is switched following a selected program - by a temperature and time program in case of a heating element, or by a recirculation piping temperature and time program in case of DHW recirculation.

TECHNICAL DATA

MAX. WORKING PRESSURE	6 bar
MAX. WORKING TEMPERATURE	110 °C
POWER SUPPLY	230 V, 50 Hz
HEATING ELEMENT SOCKET	230 V, max 3 kW
DIMENSIONS	470 x 265 x 120 mm

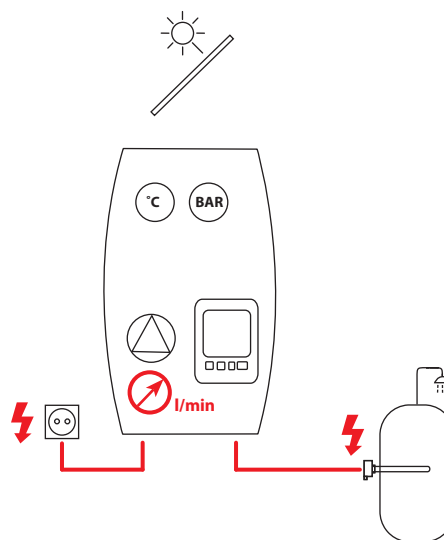
COMPONENTS

- Circulation pump Grundfos UPM3 Hybrid 25-70
- 3m power cord with el. plug for controller & pump
- **SRS1T Controller with tank sensors connected (the assembly involves 1 solar sensor and 2 tank sensors)**
- **230V power socket intended to connect an el. heating element of up to 3kW output, switched by the controller**
- **Mechanical flowmeter**
- Check valve
- Safety valve
- Fill and drain valves
- Two ball valves
- Pressure gauge
- Thermometer
- Safety valve waste pipe
- Expansion vessel connection point
- Thermoinsulating case

MODELS

Connections	G 3/4" M	G 1" M
Flow rate measurement range	2-12 l/min	8-28 l/min
Code	18970	18962

DIAGRAM



ACCESSORIES

ETT-N heating elements - see page 15

Connector for pump station socket - **code 16940**

Compression fitting adaptor for connecting a waste pipe to the safety valve:

Cu 22 x Cu 22 - **code 7629**

Cu 22 x 3/4" M - **code 13695**

